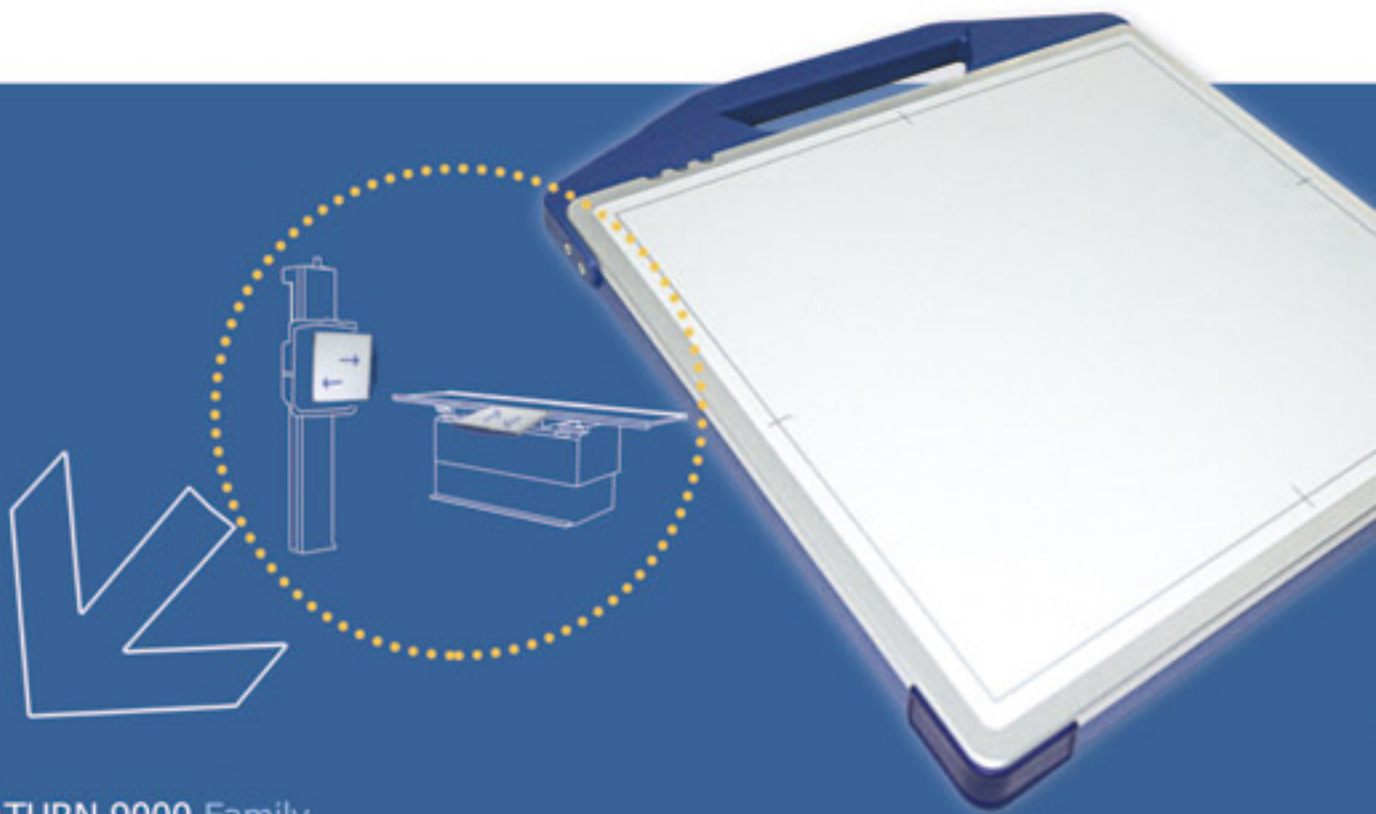


SATURN 550

UTILIZING TRUE HDDR™ TECHNOLOGY

FULLY PORTABLE DR SOLUTION

A lightweight, durable solution providing easy portability, superior image quality, immediate results, and complete DICOM functionality in a 14" X 17" form factor



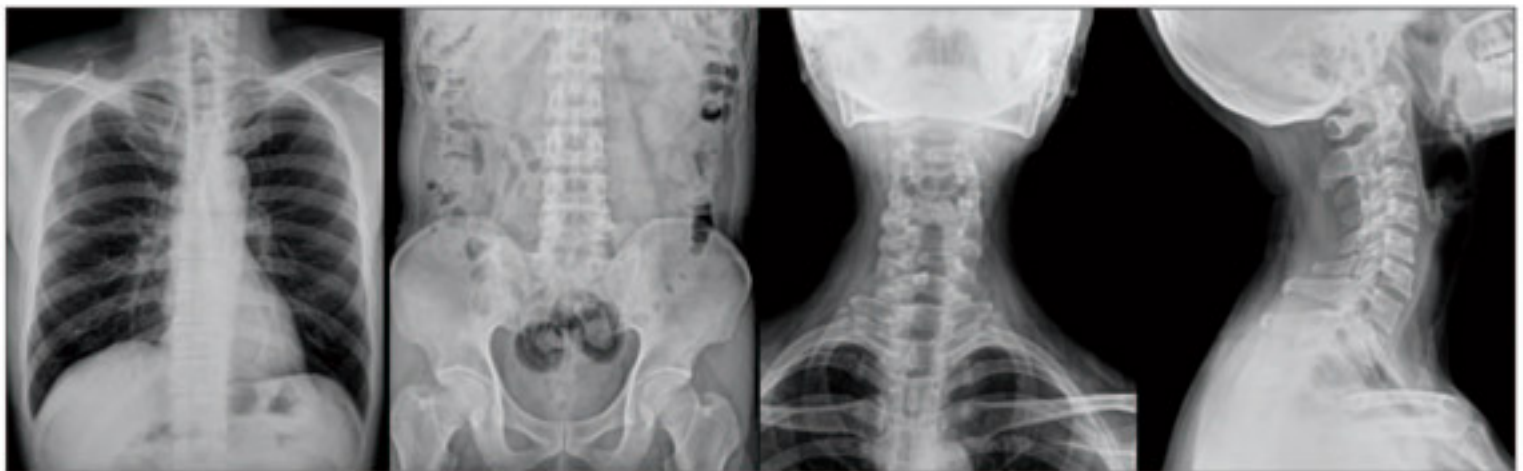
The **SATURN 9000** Family
of Radiographic Imaging
Upgrade Systems

Latest Flat Panel Technology

- Pixel Size : 168 μm \times 168 μm
- Image Matrix : 2,048 \times 2,560
- Imaging Area : 14" \times 17"
- Dynamic Range : 14bits @ 16,384 gradations
- Full Field Preview : 5~7 seconds
- Conversion Technology : a-Se Direct Conversion

Image Processing

- HDDR™ & PACE™ technologies deliver the best clinical images
- Lightweight and flexible, patient comfort and safety are easily accommodated
- Proprietary HDDR Direct Conversion technology makes the best use of delivered x-ray dose
- Speed and productivity are dramatically enhanced
- Simplified interface kit makes the system useful in a very short time



SATURN 550 Having a DR detector in all projections is always desirable, but can be expensive. The Saturn 550 allows this at the cost of a single detector.

Backed by extensive experience in medical diagnostic equipment and the optical electronics industry, NMI is able to leverage its global research and development footprint to bridge the healthcare and IT industries. NMI is positioned to push new fronts in both technology and clinical applications, providing enhanced diagnostic capabilities to imaging centers through innovative and flexible products.